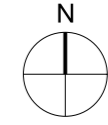


- general notes
1. © This drawing is copyright Proctor and Matthews Architects and must not be copied in whole or part without prior consent.
 2. Do not scale from this drawing.
 3. Refer to drawing number.
 4. This drawing is to be read in conjunction with all other relevant architect's and engineer's drawings.
 5. All dimensions to be checked on site prior to commencement of works and any discrepancies are to be checked with the architect immediately.
 6. Unless otherwise stated, all dimensions are in mm.



Unit Mix

- House T1 - 2B4P
A459_PMA_00_ZZ_DR_A_1000
- House T2 - 3B5P
A459_PMA_00_ZZ_DR_A_1002
- House T3 - 3B6P
A459_PMA_00_ZZ_DR_A_1003
- House T4 - 4B7P
A459_PMA_00_ZZ_DR_A_1004
- House T5A - 4B8P
A459_PMA_00_ZZ_DR_A_1005
- House T5B - 4B8P
A459_PMA_00_ZZ_DR_A_1008
- House T6 - 3B5P (Room in the Roof)
A459_PMA_00_ZZ_DR_A_1001
- House T7 - 3B6P (Room in the Roof)
A459_PMA_00_ZZ_DR_A_1006
- House T8 - 3B5P
A459_PMA_00_ZZ_DR_A_1007
- Interface T1 - 3B6P
- Interface T2 - 3B6P
- Interface T3 - 4B8P
- Interface T4 - 3B6P
- Interface T5 - 2B4P
- Apartment Building
A459_PMA_00_ZZ_DR_A_1100_P01
- Car Barn
- Mobility Hub

rev	P15	date	17-08-20	drawn	AK
comments	Drawing reference added				
rev	P14	date	11-05-20	drawn	OV
comments	Issued for Pre-App				
rev	P13	date	03-04-20	drawn	AK
comments	Position of bin stores updated				
rev	P12	date	01-04-20	drawn	OV
comments	Position of bin stores relocated. Also, indicative levels have been added				
rev	P11	date	26-03-20	drawn	OV
comments	Dwellings on the southern boundary pushed back to meet the distance stated in the SPD as well as to stay clear of wall ties				
rev	P10	date	19-03-20	drawn	OV
comments	Adjusted Kilpin Way boundary at the interface and introduced 2.5 storey 3B5P unit				
rev	P09	date	13-03-20	drawn	OV
comments	Re-arranged court layouts and pushed basin front units 9m away from basin edge				
rev	P08	date	05-03-20	drawn	OV
comments	Addressed tracking comments and added informal visitor parking				
rev	P07	date	28-02-20	drawn	OV
comments	Increased carriageway to 5.5m and introduced entrance to car barn off of the development				
rev	P06	date	21-02-20	drawn	OV
comments	Added more green space				
rev	P05	date	11-02-20	drawn	OV
comments	Removed annotation and added phase 3/4 interface				
rev	P04	date	27-01-20	drawn	OV
comments	Removed Duplex units and annex's of the river front homes				
rev	P03	date	20-01-20	drawn	OV
comments	Updated Plot Numbers				
rev	P02	date	15-01-20	drawn	OV
comments	Adjustment to the arrangement of waterside houses				
rev	P01	date	09-01-20	drawn	OV
comments	Adjustment to the mix of house types on the waterside				
rev	P00	date	08-01-20	drawn	OV
comments	Variation of waterside configuration shown in A459_P_033				

client **Blueprint**

project **A459 - Trent Basin, Nottingham**

status **Preliminary**

drawing title **Unit mix**

drawing no **A459_PMA_00_RF_DR_A_0200**

scale 1:1000 date 11-05-20 drawn OV

original A2 revision P14 checked AK

Proctor & Matthews Architects

address 7 Blue Lion Place, 237 Long Lane, London SE1 4PU

telephone +44 (0)20 7378 6695

fax +44 (0)20 7378 1372

email info@proctorandmatthews.com

website www.proctorandmatthews.com